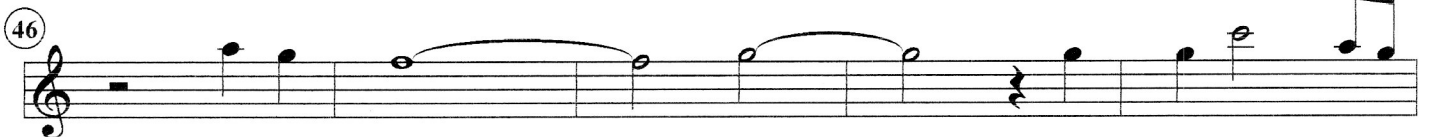
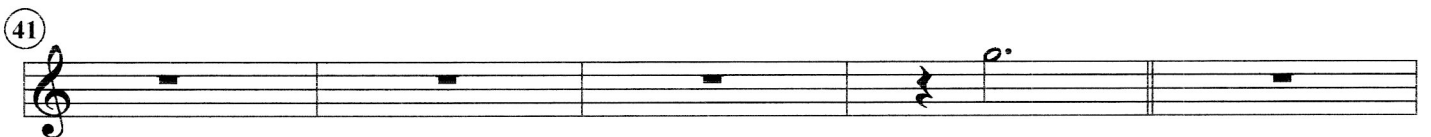
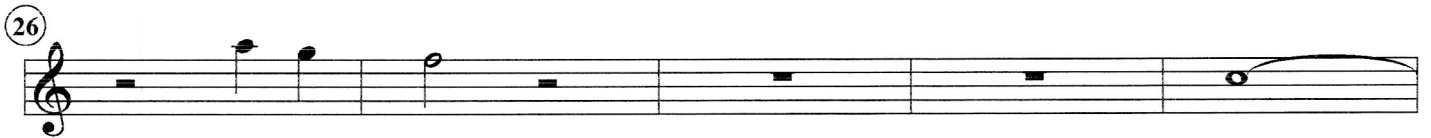
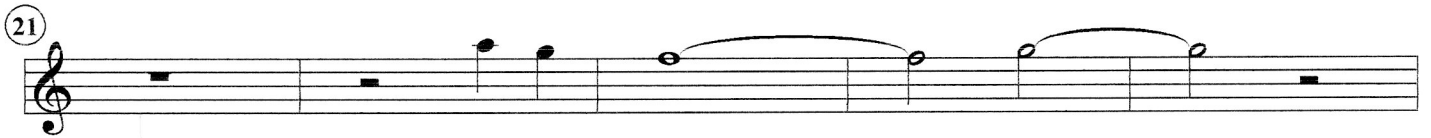
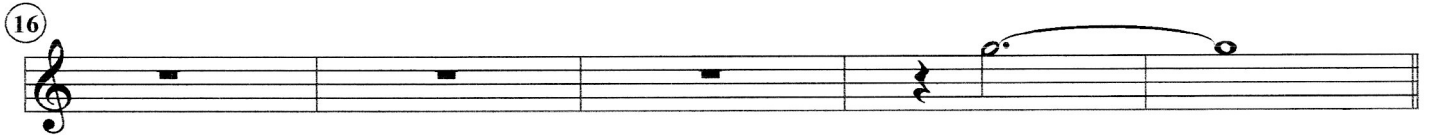
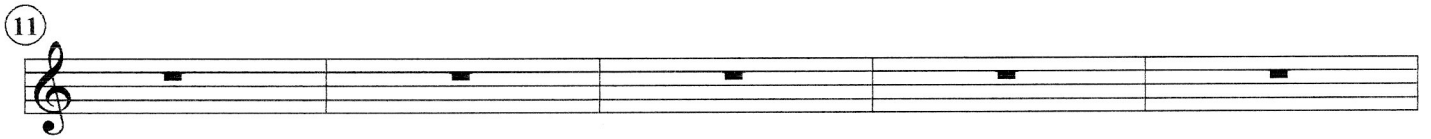
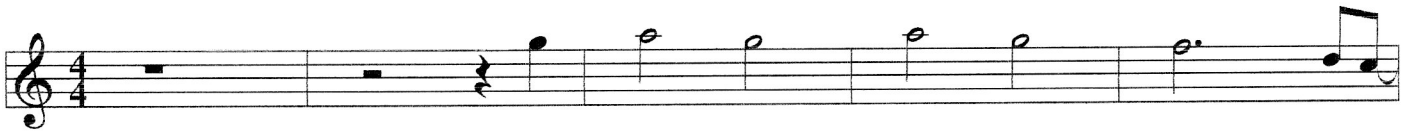


So strong

fluit



51

55

58

61

65

69

74

79

83

87

piano
Vorspiel

plus. ~~claps~~
cappuccino!

so strong

labi siffre.

C ~~G~~ F Dm ~~G~~ Am

G ~~Am~~ F G C GF

G C the?

* Vorspiel sax of fluit + piano.

C Dm

F ~~F~~ G C Dm

Dm Am ~~F~~ G 7 C F

Bas + Accorden / Gitar / Key So Strong

C voorspel F. Dm Am G F G C GF

F G C ³² ³³ F ³⁴ ³⁵ C ³⁶ ³⁷

F ³⁸ Am ⁴⁰ Dm ⁴¹ F C Dm Am G ⁴⁴

C ²¹ F ²² Dm ²³ Dm ²⁴ C ²⁵ F ²⁶

Dm ²⁷ C ²⁸ F ²⁹ C ³⁰ ⁵⁴ ⁵⁵ ⁵⁶ ⁵⁷ F G C ⁵⁹ F Dm

⁶¹ Am ⁶² G7 C ⁶³ Dm ⁶⁴ F ⁶⁵ C ⁶⁶

~~67~~ Dm ⁶⁷ F ⁶⁸ G ⁶⁹ G ⁷⁰

F ⁷¹ Dm ⁷² G7 ⁷³ F ⁷⁴ Bb ⁷⁵

Gm ⁷⁶ ⁷⁷ F ⁷⁸ Bb ⁷⁹ Gm ⁸⁰ C ⁸¹ F ⁸² ⁸³

Bb Dm F Gm Dm ⁸⁵ F Bb ⁸⁶ F Gm Dm ⁸⁷ F Bb ⁸⁸ F ⁸⁹

Rit.

So Strong

75

Handwritten musical score for the piece "So Strong". The score is written on ten staves, with the first two staves in treble clef and the remaining eight in bass clef. The time signature is 4/4. The music features a variety of rhythmic patterns, including eighth and sixteenth notes, and rests. A key signature change to one sharp (F#) is indicated in the eighth staff. A first ending bracket with a "2" is present in the fifth staff. The piece concludes with a double bar line and a "Rit..." marking. There are some handwritten annotations, including a circled "1" in the sixth staff and a circled "2" in the fifth staff.

SAX

30 slukong

voorspel

Handwritten musical notation on a five-line staff. It begins with a treble clef and a key signature of one sharp (F#). The first measure is marked with a '1' above it. The notation includes quarter notes, eighth notes, and rests. A double bar line appears after the eighth measure.

Handwritten musical notation on a five-line staff. It starts with a treble clef and a key signature of one sharp. The first measure is marked with a '9' above it. A section of the music between measures 19 and 21 is crossed out with a horizontal line and labeled 'koor' above it. The notation includes quarter notes and rests.

Handwritten musical notation on a five-line staff. It starts with a treble clef and a key signature of one sharp. The first measure is marked with a '27' above it. The notation includes quarter notes and rests.

Handwritten musical notation on a five-line staff. It starts with a treble clef and a key signature of one sharp. The first measure is marked with a '37' above it. A section of the music between measures 40 and 43 is crossed out with a horizontal line. The notation includes quarter notes and rests.

Handwritten musical notation on a five-line staff. It starts with a treble clef and a key signature of one sharp. The first measure is marked with a '49' above it. The notation includes quarter notes and rests.

Handwritten musical notation on a five-line staff. It starts with a treble clef and a key signature of one sharp. The first measure is marked with a '55' above it. The notation includes quarter notes and rests.

Handwritten musical notation on a five-line staff. It starts with a treble clef and a key signature of one sharp. The first measure is marked with a '59' above it. The notation includes quarter notes and rests.

Handwritten musical notation on a five-line staff. It starts with a treble clef and a key signature of one sharp. The first measure is marked with a '62' above it. The notation includes quarter notes and rests.

Handwritten musical notation on a five-line staff. It starts with a treble clef and a key signature of one sharp. The first measure is marked with a '67' above it. The notation includes quarter notes and rests.

Handwritten musical notation on a five-line staff. It starts with a treble clef and a key signature of one sharp. The first measure is marked with a '73' above it. The notation includes quarter notes and rests.

Handwritten musical notation on a five-line staff. It starts with a treble clef and a key signature of one sharp. The first measure is marked with a '80' above it. The notation includes quarter notes and rests.

Handwritten musical notation on a five-line staff. It starts with a treble clef and a key signature of one sharp. The first measure is marked with a '84' above it. The notation includes quarter notes and rests. The final part of the staff is heavily scribbled over with dark ink.

kit...

SAX

So strong

A handwritten musical score for saxophone in G major, 4/4 time. The score consists of 12 staves. The first staff begins with a treble clef, a key signature of one sharp (F#), and a 4/4 time signature. The music features a mix of quarter, eighth, and sixteenth notes, often beamed together. There are several dynamic markings, including '10' (piano), 'f' (forte), and 'Am' (mezzo-forte). Some notes are marked with a '3' for a triplet. The score includes various musical notations such as slurs, ties, and accents. The final staff ends with a double bar line and the word 'kit...' written below it.

kit....

C F - F G
Tekst voor drummer

SO STRONG

^C The higher you build your barriers ^F
 the taller I become ^C
 the farther you take my rights away ^F
 the faster I will run ^C
^{Am} you can deny me ^{Bb}
 you can decide to turn your face away ^G
 no matter

refr. because there's ^C something inside so strong ^F
 I know that I can make it ^C
 though you're doing me wrong so wrong
 you thought that my pride was gone oh no ^F
 there's ^C something inside so strong ^F
 something inside so strong ^C

^C the more you refuse to hear my voice ^F
 the louder I will sing ^C
 you hide behind walls of Jericho ^F
 your lies will come tumbling ^C
^{Am} deny my place in time ^{Bb}
 you squander wealth that's mine ^G
 my light will shine so brightly
 it will blind you

refr.
^F brothers and sisters
 when they insist we're just not good enough ^C
^F when we know better
 just look them in the eyes and say
^G we're going to do it anyway ^F

gettin' keer G7

